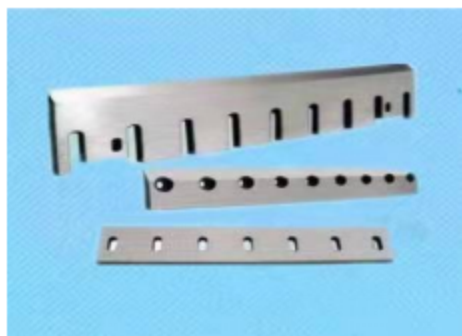
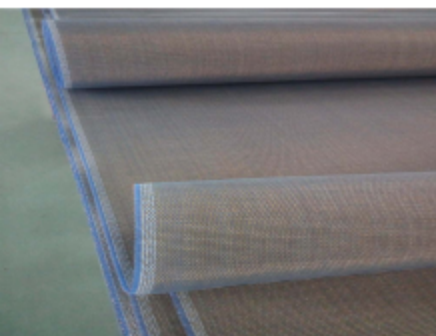




诚信 / 品质 / 服务

PRODUCT CATALOG



INTEGRITY
QUALITY
SERVICE

苏州特瑞信进出口有限公司

Suzhou Trillion Shine Import & Export Co., Ltd.

COMPANY PROFILE

Suzhou Trillion Shine Import & Export Co., Ltd (Trillion Shine) is a leading China manufacturer of press machines and Chevron flooring machines and also provides services for sourcing all related products of woodworking machinery industry from China. Relying on Chinese complete industry Chain and enjoying price advantages, we provide customers with premium products, reasonable prices, and on-time services.

Trillion Shine has a professional technique team who has been in this industry for more than 15years, consists of advanced mechanics, engineers and professors. Powerful technical capabilities extend our core competence to analysis of customer's demand and provide customer with satisfying service.

Trillion Shine has already established business relations with companies of South America, North America, Europe, Middle East, Southeast Asia and South Asia, obtained the customer affirmation and faith.

The good faith manner, the premium quality product, the exquisite service and the customer first principle are Trillion Shine's service objective. Trillion Shine sincerely wish can be establish stable business relationship with customers all over the world.



DOUBLE END-TENONER FOR CHEVRON FLOORING



Used for chamfering and making the tongue and groove for chevron flooring.

Main Features

High precision production processing.

Feeding by frequency conversion control.

Adopts advanced linear guide.

Uses 8 units of pneumatic cylinders to pinch raw board;

All adjusting shafts are equipped with counters

The chain and guides lubricated by a self-oil feeder

Technical specifications

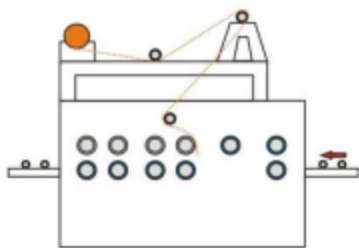
Processing length for 45 degree cuts	410-1080 mm
Processing length for 60 degree cuts	380-1020 mm
Motor for Saw blades	2.2 kw x 4 units
Saw blades rotation speed	2840 rpm
Tilting angle saw blades	0-20°
Saw blade 1	OD: 300 mm, ID:25.4 mm, 4 pieces
Saw blade 2	OD: 250 mm, ID:25.4 mm, 1 piece
Motor for mortising tools	3kw x 2 units
Notching tool rotation speed	8000 rpm
Feed motor	1.1 kw, Inverter control
Feed speed	0-10 m/min adjustable

PVC/PAPER STICKING MACHINE



The machine is suitable for small/medium enterprises of furniture with the features of no wrinkles, bubbles and high rate of quality products.

Working principle



Adopt to advanced technology of laminating with the high precision, reasonable overlay, novel structure and easy operation, which is top choice of PVC/Paper sticking machine. Front-rear conveyors, spreading glue system, unwinding structure, automatically cutting system for option, Heating System.

Technical Parameters

Min. Board length: 600mm

Board width: 1220mm

Paper width: 1280mm

Board thickness: 3~25mm

Feeding speed: stepless adjustment

Main axis roller Dia.: $\Phi 190$

Total power: 8Kw

Weight: 2250kg

Overall dimensions: 6300×2100×2550mm

SHORT CYCLE LAMINATING PRESS



Short Cycle Laminating Press for manufacturing of	Melamine faced chipboard Melamine faced MDF
Sizes	4'x8', 4'x9', 6'x8', 6'x9', 7'x9' and 6'x12'
Lamination	Both sides
Specific Pressure	From 30kg/cm ² to 80kg/cm ² .
Mech.Cycle Time	From 12s to 22s
Loading Mode	Transverse or Longitudinal feeding board orientation by either Tray Belt Loader or Clamping Loader
Machine Control	Industrial Computer (PLC) with HMI

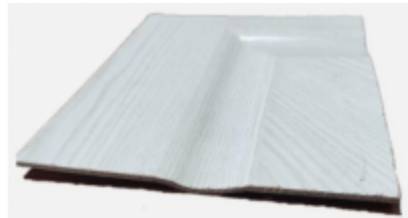
From simple manually operated machines through to fully automated machines, we have the ability to custom design a system to your requirements. We have several options available including a Raw Board Feeding Unit, Panel Cleaning Units, Automatic Paper Layout Unit, Automatic Registration System, Automatic Finished Board Trimming, Board Cooling Station, and Inspection & Stacking Stations.

Our Press Frames are precision ground with high accuracy ensuring the upper and lower heating platens are parallel, minimizing production reject.

Each heating platen has high precision automatic temperature control ensuring production stability.



MULTI-LAYER HOT PRESS FOR DOOR SKIN



Used to produce melamine door skin, HDF/MDF Door Skin and Veneer Door Skin
Synchronizers ensure the mold halves close & open at the same time

An additional guide system reduces the friction of mold, extending mold life and keeping the mold in good working order.

We can provide Door Skin Presses with either Bottom or Top mounted cylinders.

Loading mode: Transverse or longitudinal feeding board

Technical parameters

Finished Size	Specific Pressure	Daylight opening	Heating platen	Main Oil cylinder (diameter x stroke)
3'x7'	9000KN	250mm, 3/4 layers	2250x1150x50mm, 4/5 nos.	Φ280x450mm, 6 nos.
4'x7'	9000KN	250mm, 3/4 layers	2250x1350x50mm, 4/5 nos.	Φ280x450mm, 6 nos.
3'x7'	12000KN	250mm, 3/4layers	2250x1150x50mm, 4/5 nos	Φ320x450mm, 6 nos.
4'x7'	12000KN	250mm, 3/4 layers	2250x1350x50mm, 4/5 nos	Φ320x450mm, 6 nos.

DOOR SKIN MOULDS

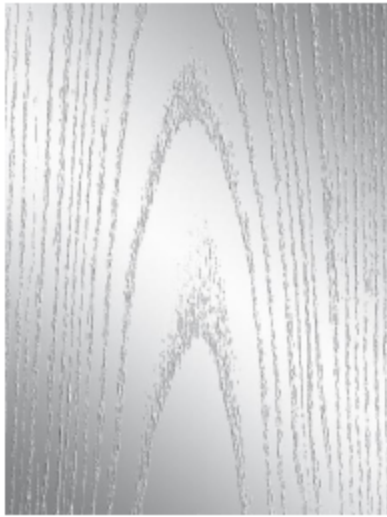
They are used for moulding door skin, work with the door press machine.

45# steel / 304 stainless steel, Top mould with hard chromed single side.

Size & Pattern can be customized as per user requirements.



PRESS PLATES



Hardened Stainless Steel Press Plates are used to produce different finish and different designs on laminates board (flooring and furniture board, veneer, film faced plywood and HPL)

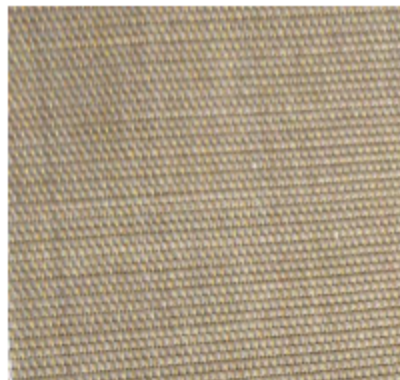
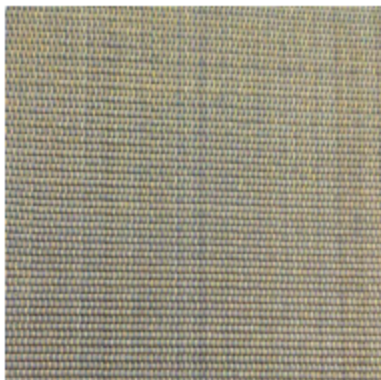
Material: Stainless Steel 304, 410 and 633 with Hard Chromium plating

Size: We can produce any size our customers require to a maximum of 2000mm x 4000mm

Thicknesses: 3, 4, 5 and 6mm are readily available.

Design: Glossy, Matte, Satin, Pearl, Suede, Wood Grain and other Artistic Grain finishes. We can also develop custom designs to match the special requirements of our customers.

PRESS PADS



The laminates production depends a great degree on even pressure over the entire surface to obtain a flawless product. This requires press pads with adequate heat transfer capability to equalize the thickness tolerances.

It is used for even heat and pressure distribution during laminates manufacturing.

Material: Silica gel and Brass wire

Size: We provide a maximum width of 3800mm, to any length

Gram weight: 3700-3900 g/m²

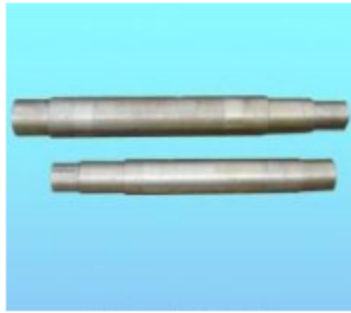
Heat resistant: $\leq 230^{\circ}\text{C}$

Pressure resistance: $\leq 35\text{Mpa}$.

FORESTRY MACHINERY ACCESSORIES



Knife roller



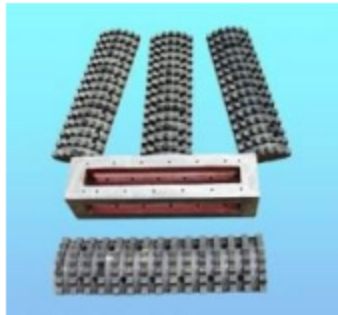
Axis



Locking device



Feed roller



Square shaft & toothed plate



Screen mesh



Transmission components



Knife press



Bearing support



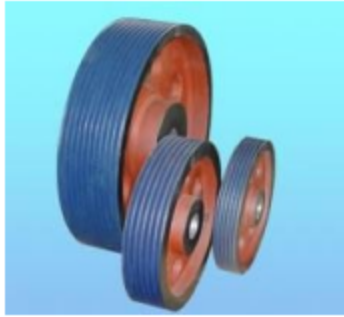
Beam



Baffle plate



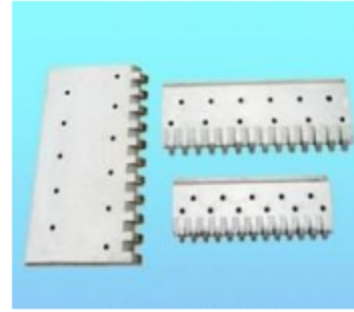
Oil cylinder



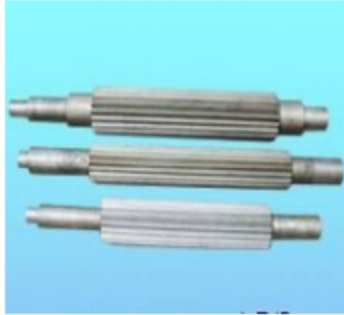
Pulley



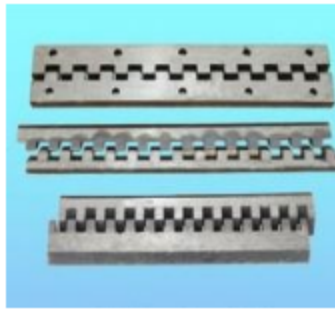
Feed roller shaft



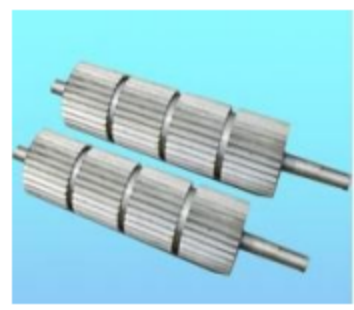
Lower comb plate



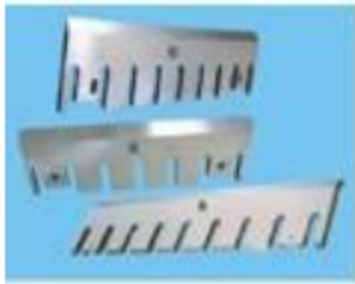
Supporting roll



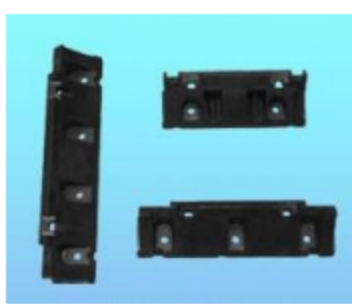
Comb slip



Conveyor tooth roller



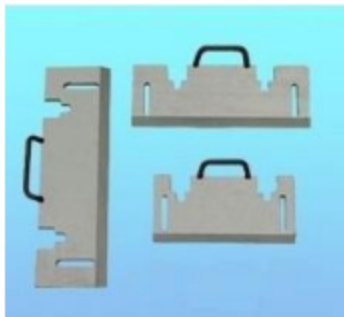
Chipper knives



Knife fixture



Hollow shaft



Knife press



Impeller



knife-ring



Dead knife press



Thickness gauge of Multi-layer press

苏州特瑞信进出口有限公司

Suzhou Trillion Shine Import & Export Co., Ltd.

Office Add: Rm.1803, Bld.1, No.1, LVGEM Business Plaza,
No.199 Tayun Rd.Wuzhong Dist., Suzhou City 215104

Tel/Fax: +86(0)512 6626 7026

Mob: +86 189 6214 6596

Email: trillionshine@vip.163.com

Website: www.trillionshine.com

